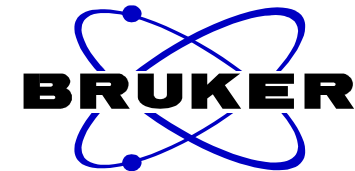


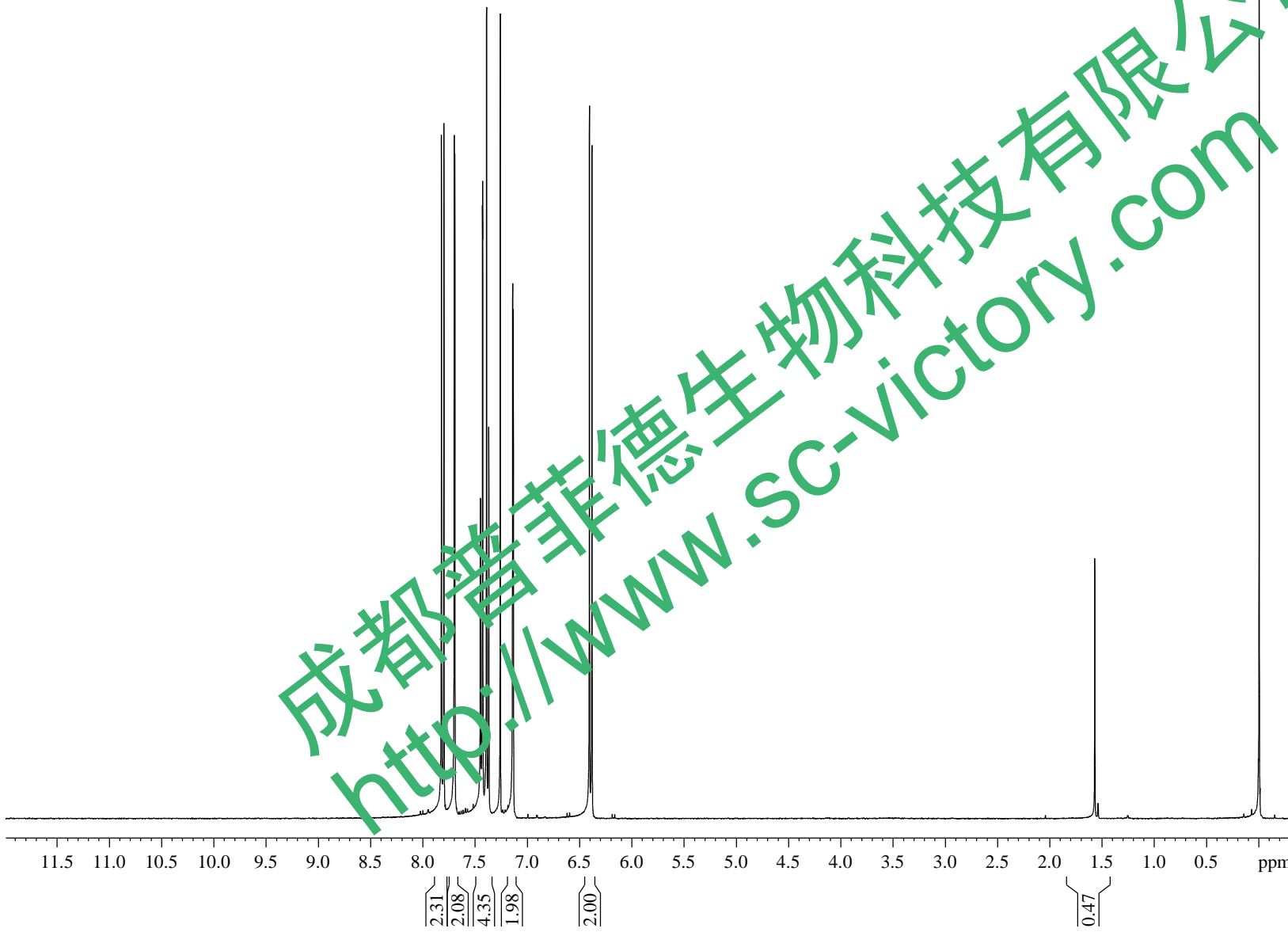
yibuguzhisu, 1H, 298K, CDCl3



7.8250
7.8011
7.7021
7.6966
7.4527
7.4509
7.4314
7.4295
7.3929
7.3715
7.2616
7.1437
7.1418
7.1383
7.1363
6.4082
6.3843

1.5712

-0.0018

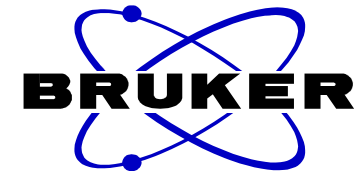


NAME yibuguzhisu
EXPNO 3
PROCNO 1
INSTRUM spect
PROBHD 5 mm PADUL 13C
PULPROG zg30
TD 38460
SOLVENT CDCl3
NS 16
DS 0
SWH 6410.256 Hz
FIDRES 0.166673 Hz
AQ 2.999299 sec
RG 203
DW 78.000 usec
DE 6.50 usec
TE 298.2 K
DI 1.00000000 sec
TD0 1

===== CHANNEL f1 =====
NUC1 1H
P1 9.68 usec
PL1 -3.50 dB
PL1W 23.61833572 W
SFO1 400.1328009 MHz
SI 32768
SF 400.1300091 MHz
WDW EM
SSB 0
LB 0.30 Hz
GB 0
PC 1.00

成都普菲德生物科技有限公司
http://www.sc-victory.com

yibuguzhisu, ¹³C, 298K, CDCl₃



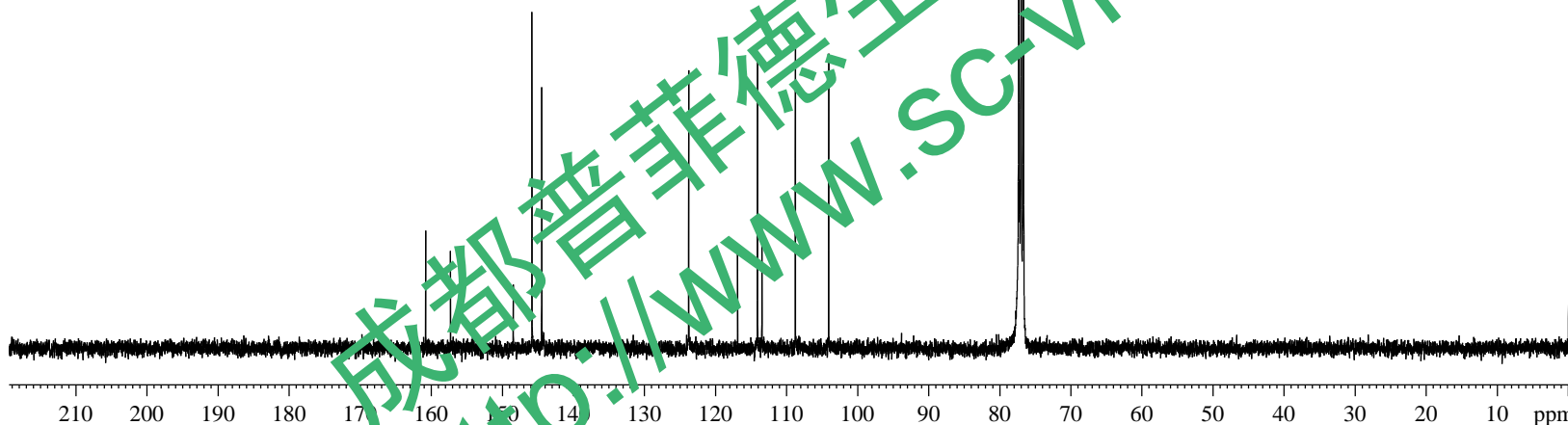
160.8330
157.3605
148.5150
145.8810
144.5048
123.8201
116.9367
114.1391
113.5195
108.8103
104.1207
77.3420
77.2280
77.0238
76.7069

NAME yibuguzhisu
EXPNO 2
PROCNO 1

INSTRUM spect
PROBHD 5 mm PADUL 13C
PULPROG zgpg30
TD 65536
SOLVENT CDCl₃
NS 2048
DS 0
SWH 25252.525 Hz
FIDRES 0.385323 Hz
AQ 1.2976629 sec
RG 203
DW 19.800 usec
DE 6.50 usec
TE 298.2 K
D1 2.00000000 sec
D11 0.03000000 sec
TD0 1

==== CHANNEL f1 =====
NUC1 13C
P1 10.26 usec
PL1 -1.05 dB
PL1W 42.86519241 W
SFO1 100.6243395 MHz

==== CHANNEL f2 =====
CPDPRG2 waltz16
NUC2 1H
PCPD2 80.00 usec
PL2 -3.50 dB
PL12 14.84 dB
PL13 14.70 dB
PL2W 23.61833572 W
PL12W 0.34613800 W
PL13W 0.35747799 W
SFO2 400.1328009 MHz
SI 32768
SF 100.6127688 MHz
WDW EM
SSB 0
LB 1.00 Hz
GB 0
PC 1.40



成都普菲德生物科技有限公司
http://www.sc-victory.com